



Ysgol Sant Dunawd

School Prospectus
2025 – 2026



Table of Contents

Welcome from the Headteacher	3
Our Vision & Values	4
What Makes us Special	5
Organisation	6
Curriculum	7-8
School Life	9-10
Inclusion & Wellbeing	11
Beyond the Classroom	12-13
Admissions & Transitions	14
Staffing & The Governing Body	15
Family Planner 25/26	16

Welcome From the Headteacher

Dear Parents,

Welcome to Ysgol Sant Dunawd, a school where every child is known, valued, and inspired to thrive. It is a joy to share with you our prospectus, which celebrates the rich learning experiences and caring community that make our school such a special place.

At Ysgol Sant Dunawd, our mission, "Belong, Believe and Become your Best" shapes everything we do. We are deeply committed to ensuring that every child feels a true sense of belonging, develops confidence in their own abilities, and is supported to reach their full potential both inside and beyond the classroom.

Our staff work tirelessly to provide a stimulating, inclusive, and nurturing environment. We recognise that children learn best when they are happy, safe, and engaged, and we take pride in fostering curiosity, creativity, and a lifelong love of learning.

Our broad and balanced curriculum provides opportunities for every child to shine, encouraging independence, collaboration, and resilience. From exciting projects and outdoor learning to expressive arts and sport, we ensure that each pupil's individuality and talents are celebrated.

At the heart of our success is a strong partnership between home and school. We truly value our families and wider community, knowing that when we work together, our children flourish.

As you read this prospectus, we hope you gain a real sense of the warmth, energy, and ambition that define Ysgol Sant Dunawd. We invite you to visit us, meet our staff and pupils, and experience the spirit of our school for yourself. Together, we will continue to Belong, Believe, and Become our Best.



**Warm regards,
Joshua Jones**

A handwritten signature in black ink, appearing to read 'J. Jones'.

Acting Headteacher



Our Vision & Values

Our Vision

At Ysgol Sant Dunawd, we believe that every child deserves the opportunity to reach their full potential. It is our commitment to nurture, inspire, and empower all children to thrive and flourish.



Belong, Believe, Become your Best

Belong

We foster a sense of belonging to our school, families, community, and Welsh culture. Our nurturing and collaborative environment enables pupils to feel happy, secure, and valued; encouraging respect, empathy, and individuality.

Believe

We encourage ambition, confidence, self-esteem, resilience, perseverance, motivation, positivity, and pride. We believe that every pupil can achieve their aspirations through a love of learning and a strong sense of self-belief.

Become your Best

We nurture and celebrate academic, moral, social, spiritual, and physical growth. Our pupils learn to take ownership and responsibility for their development and achievements through effort, determination, and dedication, preparing them for a successful and fulfilling future.

Our Vision Pillars

Children at Ysgol Sant Dunawd will develop a sense of belonging, believe in themselves, and become their best when supported by our four vision pillars:

Fun, Friendship, Family, and Inspiring Futures.

- We promise to provide a caring, happy, and inclusive environment, alongside an enjoyable and inspiring curriculum that reflects our beautiful local area, incorporates the interests and ideas of our children, and meets all their needs.
- Wellbeing is at the heart of everything we do. We are committed to building positive relationships with pupils, families, and our community.
- We work together as one school family, supporting, respecting, and caring for each other in a safe and inclusive environment where everyone is valued.
- We ignite a passion for lifelong learning, celebrate achievements along the way, and support our children to aspire to be the very best they can be.

What Makes us Special

A Nurturing School Family

Wellbeing is at the heart of everything we do. Relationships are key – our pupils are surrounded by adults who listen, care and guide them with warmth and consistency.

“The kind teachers and friendly friends.”
Year 4 pupil

Celebrating Success

At Sant Dunawd, success takes many forms. We recognise kindness, effort, perseverance and progress just as much as achievement. We want our pupils to leave us with pride, purpose and the confidence to take on whatever comes next.



A Voice for Every Child

We believe that children should be active participants in their education. Through Senedd Sant Dunawd, there are many opportunities for our children to voice their ideas and opinions about how they would like their school to be and the changes they would like to make.

Learning that Inspires

Learning here is creative, practical and full of joy. From our engaging INSPIRE curriculum to our Forest School, children are given opportunities to explore, question and discover the world around them.

“A small school with lots of amazing and kind children!”
Year 3 pupil



“My teachers!”
Year 1 pupil

Belonging to Our Community

Our school sits at the heart of Bangor-on-Dee, and we are proud of our close links with families, St Dunawd's Church and our local community. We work together to ensure every child feels connected, supported and part of something special.

veso i
GOL SANT DUNAWD



Organisation

General School Structure

Ysgol Sant Dunawd is a dynamic and vibrant Community Primary School, nestled in the heart of Bangor-on-Dee. We are proud to be part of the Maelor cluster of schools, which feed into The Maelor School in Penley.

Our school caters for children aged 3 to 11 years. Pupils can begin their educational journey in part-time Nursery during the September following their third birthday, moving on to full-time school the following September.

Within our school building, Bangor-on-Dee Childcare (**07359187248**) provides high-quality childcare for children from the age of 2 years, as well as full wraparound care for all pupils until 6:00pm, supporting our families with flexible and nurturing provision.

For our younger learners, we have two bright, airy classrooms, each with direct outdoor access. These classrooms share an open-plan space filled with exciting areas for exploration, play, and discovery.

For our older learners, there are two spacious classrooms designed to support both collaborative and independent learning. Our facilities also include a well-resourced library, a quiet nook area and a large multi-purpose hall, used for assemblies, performances, and physical education.

Beyond the classroom, our extensive school grounds provide a wealth of opportunities for play, sport, and outdoor learning. We are proud to offer:

- Expansive playing fields
- Hard and soft play areas
- Shelters and seating areas
- A trim trail and loose-parts play zone

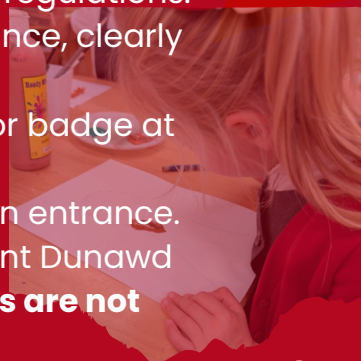
We are also fortunate to have our own woodland forest area and a purpose-built outdoor classroom, where pupils can enjoy hands-on learning experiences in nature. All entrances, including access to the outdoor classroom, are equipped with ramps, ensuring full accessibility for wheelchair users and visitors with mobility needs.

School Security

Your child's safety and security are of paramount importance. Our building is fitted with a comprehensive security system that fully complies with fire safety regulations.

- All visitors and late arrivals enter the building through the main entrance, clearly marked at the front of the school.
- Upon arrival, visitors must sign in at the main office and wear a visitor badge at all times while on site.

When leaving, all visitors should sign out and exit again through the main entrance. Please do not attempt to enter or exit through any other doors. Ysgol Sant Dunawd operates a strict **no smoking policy** across the entire school site. **Dogs are not permitted** on school premises at any time.



Curriculum

At Ysgol Sant Dunawd, we recognise that education is one of the most powerful ways we can positively shape our children's futures and, in turn, our society. We use the term education in its broadest and richest sense, it means far more than academic results. It encompasses our children's intellectual, social, and emotional development; their sense of citizenship and responsibility; and their overall happiness and success.

Our curriculum is thoughtfully designed to secure firm foundations in English, Mathematics, and Digital skills while fostering growing excellence across all Areas of Learning and Experience.



The Curriculum at Ysgol Sant Dunawd

Our curriculum has been carefully developed by our teachers to meet the specific needs and aspirations of our children. Using knowledge of our pupils and our local community, we design stimulating and challenging learning experiences that help our children grow as ambitious, capable learners and ethical, healthy citizens of Wales.

Every learning experience at Ysgol Sant Dunawd is underpinned by the Four Purposes of the curriculum for Wales. These purposes guide everything we do, ensuring that our children become:

- Ambitious, capable learners, ready to learn throughout their lives.
- Enterprising, creative contributors, ready to play a full part in life and work.
- Ethical, informed citizens, who show respect for themselves, others, and the world.
- Healthy, confident individuals, ready to lead fulfilling lives as valued members of society.

For more information about our curriculum rationale — Scan the QR Code.



curriculum rationale

Foundation Phase Learning

Children begin their learning journey in our Nursery class (**Dosbarth Alyn**), where every day is filled with fun, exploration, and discovery and, best of all, new friends to share it with!

Our youngest learners are introduced to the social world of interaction, sharing, and communication. They are supported by our dedicated and nurturing staff, who take time to listen to and talk with each child, building strong relationships and trust.

Children enjoy a wide variety of exciting experiences designed to encourage curiosity, creativity, and independence. Activities are carefully planned to develop key skills across all Areas of Learning, while fostering confidence, imagination, and a lifelong love of learning.





We place great emphasis on developing our children's creativity and imagination. Young children are natural adventurers — curious about the world and eager to explore. We make the most of this by taking learning beyond the classroom every day, whatever the weather.

Moving Up

As children progress, they move into two further classes which continue to embrace the Foundation Phase approach:

Dosbarth Elwy (Reception and Year 1) **and Dosbarth Ceiriog** (Year 2 and Year 3).

Teaching and learning in these classes are alive with energy and purpose. Learning experiences combine hands-on, experiential activities, focused tasks, and opportunities for child-initiated play. Children are encouraged to apply and develop their skills across a variety of contexts, fostering independence and confidence. We place a strong emphasis on the development of basic skills — literacy, numeracy, and digital competence.

At Ysgol Sant Dunawd, we offer rich opportunities for every child to grow physically, culturally, spiritually, personally, and socially. Our broad, enriched, and differentiated curriculum provides meaningful, real-world learning experiences that inspire curiosity and joy.

Getting Older

Our Year 4, Year 5, and Year 6 pupils make up the remaining class within our school. These learners enjoy fun, stimulating, and challenging lessons that prepare them for the next stage of their educational journey. Building upon their firm foundations, children continue to refine their basic and creative skills through a wide variety of engaging and purposeful learning experiences.

Learning takes many forms, from collaborative projects and outdoor exploration to focused skills sessions. Each lesson is carefully structured to balance experience, skill development, and knowledge acquisition. Our pupils engage in rich, broad, and deep learning across the Areas of Learning and Experience (AoLEs). We ensure that they have time to acquire, practise, and apply their learning fully before moving on.

A golden thread running through all our work is learning about Wales. Its language, heritage, and culture. We are proud to celebrate our Welsh identity and to nurture our pupils as confident, bilingual citizens .

Home–School Partnership

At Ysgol Sant Dunawd, we value strong partnerships with families and carers, recognising that working together enhances every child's learning experience. Our Home–School Agreement outlines the shared roles and responsibilities that support this collaboration.

Parents are invited to take part in Family Learning 'Come and Do' days each term, as well as Progress Review Meetings in the autumn and spring, with an additional summer meeting if needed. A written annual report is also provided at the end of the summer term.



School Life

School Uniform

Our school uniform is an important part of life at Ysgol Sant Dunawd. It promotes a sense of pride, unity, and belonging within our school family, helping our pupils to feel part of a caring and respectful community. We have high expectations for how both pupils and staff present themselves each day, reflecting our shared values of respect, responsibility, and pride in our school. Many items of our school uniform can be purchased from high street shops at a reasonable cost. Alternatively, branded items featuring our school logo can be ordered from RAM Leisurewear (scan QR Code). Pupils are expected to wear their school uniform every day.



RAM Leisurewear

Our School Uniform:

- Grey school trousers, skirt, tailored shorts, or grey pinafore dress / red gingham summer dress
- White shirt, blouse, or polo shirt
- Red sweatshirt or cardigan
- Sensible black shoes or plain black trainers
- Plain black, white, or grey socks or tights

Physical education is an important part of school life at Ysgol Sant Dunawd, and we ask that all pupils come prepared with the correct kit for every session.

PE Kit:

- Plain white t-shirt or house-coloured t-shirt (red, green, or blue)
- Plain black shorts
- Plain black pumps or trainers
- Swimming costume or trunks, and a towel
- During the winter months, children may also bring a plain black tracksuit for outdoor PE lessons.



Forest School Kit

- A long-sleeved top and trousers, or a plain tracksuit
- A waterproof coat with a hood
- A warm hat or sun hat, and gloves (appropriate to the season)
- Warm socks (plus a spare pair)
- Sturdy boots or wellingtons

Jewellery and Personal Items

For safety reasons and to prevent loss or damage, jewellery should not be worn to school.

- **Permitted items:** small stud earrings and watches.
- **Not permitted:** smart watches with communication functions, or any other jewellery items.

Mobile phones should not be brought into school.

Behaviour

At Ysgol Sant Dunawd we are Ready, Safe and Respectful. Children are expected to behave well and show respect for others and their property. As a school, we have a behaviour policy that everyone follows – this can be viewed on our website. Many positive reward systems are used in school, such as special achievement awards, certificates, stickers and special treats (including Head Teacher's Hot Chocolate).

We believe that positive behaviour stems from:

- ✓ Positive relationships
- ✓ A good understanding of children's circumstances and individual needs
- ✓ A well planned, relevant curriculum
- ✓ High expectations
- ✓ A commitment by all staff to the policies and ethos of the school
- ✓ A positive relationship between home and school
- ✓ Praise and celebration of achievement

We want children to love their learning and have a thirst for knowledge. We aim for all children to foster a positive attitude to learning, by promoting our Ysgol Sant Dunawd Super Learning Powers.



Attendance & Punctuality

It is absolutely essential that your child attends school every day unless they are very poorly. There is a legal requirement for the school to keep a strict record of all absence.

Please notify the school **before 08:30** if your child is absent and supply a reason.

Absences are only authorised for illness, medical appointments or other exceptional circumstances which are outlined in our attendance policy. Holidays during term time should be avoided. The school monitors attendance carefully and will investigate persistent absence in accordance with school policy and the law.

Relationships and sexuality education (RSE)

RSE is part of the overall provision of Personal, Social and Health Education. It is concerned not only with the knowledge of facts but also with the development of attitudes and values. Children's questions are answered honestly and sensitively, at their own level of understanding, as and when they arise.

Religion, Values and Ethics (RVE)

RVE is taught at Ysgol Sant Dunawd mainly through themes and topics, when they link authentically. When teaching, we follow the Local Authority's (LA's) preferred syllabus, SACRE. Many assemblies have a religious or ethical theme.

Collective Worship

Collective Worship plays an important role in creating the strong family ethos that lies at the heart of Ysgol Sant Dunawd.

Worship is broadly Christian in nature and offers opportunities to celebrate the successes and achievements of our pupils and wider school community. There is an act of Collective Worship and reflection every day.



Inclusion & Wellbeing

Additional Learning Needs (ALN)

ALN refers to children and young people aged 0–25 who require Additional Learning Provision (ALP) to support their learning. A pupil has ALN if they have a learning difficulty or disability, whether arising from a medical condition or otherwise, that calls for ALP.

Universal Provision

Universal Provision is the support routinely available to all pupils. It may be provided at a whole-class, small-group, or individual level and is monitored and tracked in line with school procedures. Provision may be short-term or longer-term, and in some cases may be at a Targeted Level, requiring a Targeted Universal Provision Plan (TUPP).

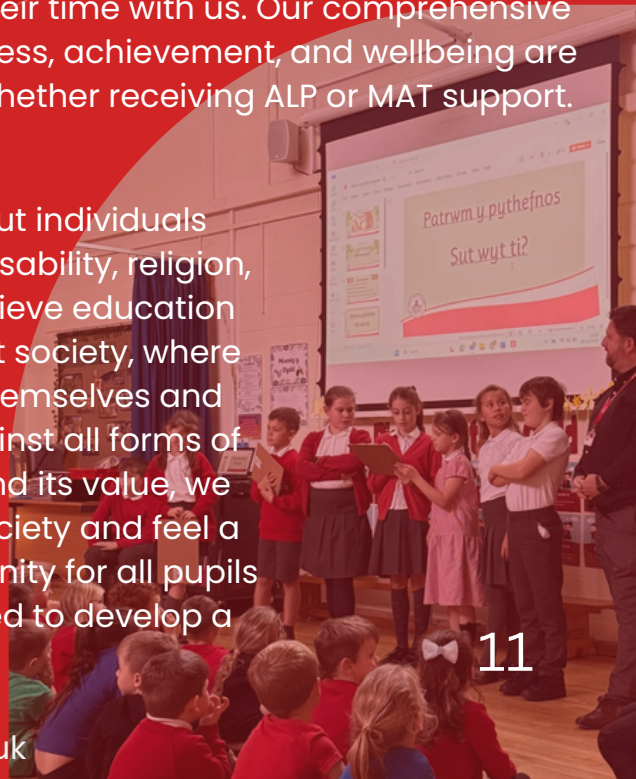
If a pupil is not making expected progress, ALP may be needed. This involves identifying the pupil's needs in a person-centred way and providing enhanced or alternative support to help them succeed. Pupils who access ALP are classed as having ALN and will have an Individual Development Plan (IDP).

More Able and Talented Pupils

We also place a strong emphasis on supporting pupils who are More Able and Talented (MAT). These pupils are carefully monitored and provided with challenge and enrichment in the classroom environment. Our teaching and learning are differentiated, creative, and engaging, allowing every child to aim for the highest level of personal achievement. A variety of strategies are used to identify MAT pupils, with identification beginning when the child joins the school and continuing throughout their time with us. Our comprehensive pupil tracking systems ensure that progress, achievement, and wellbeing are consistently monitored for all learners, whether receiving ALP or MAT support.

Equality

At Ysgol Sant Dunawd, equality of opportunities is about individuals regardless of ability, age, appearance, culture, gender, disability, religion, race, gender reassignment or sexual orientation. We believe education has a crucial role to play in bringing about a fair and just society, where people have a mutual respect and understanding of themselves and each other as citizens. Together with the LA we work against all forms of discrimination. By ensuring an awareness of diversity and its value, we aim to prepare for a life in which all can contribute to society and feel a belonging within it. We aim to provide equality of opportunity for all pupils and an environment in which individuals are encouraged to develop a sense of personal and cultural identity.



Beyond the Classroom

Extended School and Extra-Curricular Activities

At Ysgol Sant Dunawd, we provide a range of extended school services and extra-curricular opportunities to support families and enrich pupils' learning experiences.

Breakfast Club

Our Breakfast Club runs daily for pupils from Reception to Year 6, from **07:50 to 08:35**.

The cost is **£3.00 per child** or £1.00 for children eligible for free school meals.

Children may attend **free of charge between 08:20 and 08:35**.

Breakfast Club provides a safe, welcoming environment for children to start their day, enjoy a nutritious breakfast, and spend time with friends. For more information, please enquire at the school reception.

Afterschool Care

Bangor-on-Dee Childcare offers wraparound care after school, operating daily until 18:00. For details about availability, pricing, and activities, please contact Bangor-on-Dee Childcare directly on 07359187248.

Extra-Curricular Clubs

Across the year we offer a wide and varied range of after-school and lunchtime activities, usually free of charge if led by our staff. These clubs differ each term and have included activities such as: Cookery; Craft club; Dance; Film club; Art; Performing arts; Netball & Football

Music Lessons

Pupils can also participate in individual or small-group music lessons through the Wrexham Music Co-op. Lessons must be booked and paid for online by parents, though children eligible for free school meals may receive lessons free of charge.

Trips and Educational Visits

At Ysgol Sant Dunawd, learning goes beyond the classroom. We arrange educational visits, workshops, and focus days, such as Diversity Week and Science Week to give pupils meaningful, real-world experiences.

Older pupils have opportunities for residential visits, which have previously included Cardiff, Glan Llyn, and Nant Bwlch yr Haearn. Destinations and participating year groups may vary each year.



Senedd Sant Dunawd

Each year, pupils from Year 1 to Year 6 participate in Senedd Sant Dunawd, our school parliament. It gives children the opportunity to voice opinions, influence decisions, and contribute to school life.

Senedd is divided into ministries, such as Health and Wellbeing, Welsh Language, Technology, Environment, and Education. Each led by pupils taking on roles like chairperson, secretary, or treasurer. Ministries meet regularly to plan projects, lead class discussions, and work with staff to address challenges. All ministries come together once a term for a full Senedd meeting, facilitated by the First Minister, to review progress and plan next steps. Ministries also contribute to assemblies and hold lunchtime sessions to gather ideas from fellow pupils.

Ysgol Sant Dunawd's PTA

Our PTA is a fantastic group of parents and staff who work together to make our school an even better place for learning and fun! They organise exciting events such as Bingo nights, fundraisers, and special themed days, bringing our school community closer together.

The PTA also plays a vital role in supporting our school by helping to buy new books, equipment, and playground improvements, ensuring that Ysgol Sant Dunawd remains an inspiring and enjoyable place for all pupils.

Joining the PTA gives you the opportunity to be part of a team that actively contributes to school life, helps make positive changes, and strengthens the connection between families, staff, and the wider community.



Ministry for Education 25/26

Public Access to Documents

By law, Headteachers are required to make certain documents available to parents. These can be accessed from the school office or via our school website. The following documents are available on request:

- ✓ The School Prospectus
- ✓ The most recent Annual Report of the Governors
- ✓ The LA and Governors' Statement of curriculum aims and policy
- ✓ Statutory Orders and Circulars published by the Department for Education and Science
- ✓ The school's Estyn Inspection Reports
- ✓ Details of the LA's arrangements for complaints about the school
- ✓ Syllabuses and Schemes of Work currently in use
- ✓ The LA's agreed syllabus for Religious Education



School website –
Policies and Documents

Admissions & Transitions

Organisation of Admissions

Admissions to Ysgol Sant Dunawd are managed by Wrexham County Borough Council. The Admissions Team are happy to advise parents on all aspects of school admissions across Wrexham.

Nursery — Children can start in the September following their third birthday. Nursery places are offered on the basis of five 2.5-hour sessions per week for each child.

Reception — Children start in the September following their fourth birthday and attend school full-time.

Childcare Provision — Bangor-on-Dee Childcare, based within the school building, provides high-quality childcare for children aged 2 and above, from 08:00 to 18:00 each weekday. Children attending our Nursery can also join Nursery Plus after their morning session.

Childcare may be free of charge for eligible families under the Welsh Government's 30-hours free childcare scheme. For more information, please contact Bangor-on-Dee Childcare on 07359187248.

Transferring from Another School

If your child is transferring from another school, please contact Wrexham County Borough Council Admissions on 01978 292000, who manage admissions to Ysgol Sant Dunawd.

We warmly encourage prospective families to visit our school to experience our welcoming atmosphere. Please contact the school office to arrange an appointment with the Headteacher.

Transition

We understand that moving from home to school and later, from primary to secondary education is a big step in every child's journey. We work closely with families to ensure that every transition is a smooth, supportive, and enjoyable experience.

Our strong partnerships with parents help us nurture happy, confident, and resilient learners who feel safe and ready to succeed.

We also have excellent links with The Maelor School, Penley, which many of our pupils move on to after Year 6. Regular meetings between staff, joint activities, and pupil visits help ensure a seamless transition to secondary school.

For pupils transferring to other secondary schools, we maintain close communication with each setting to ensure every child's transition is handled with care and continuity.



Staffing 2025–2026

Joshua Jones – Acting Head Teacher & Designated Safeguarding Leader

Steven Jones – Deputy Designated Safeguarding Leader & Dosbarth Clywedog (Year 4, Year 5 and Year 6) teacher

Mark Wyeth – Dosbarth Ceiriog (Year 2 and Year 3) teacher

Bethan Barry – Dosbarth Elwy (Reception and Year 1) teacher, ALNCo & PDG Lead

Julie Johnson – Dosbarth Alyn (Nursery) teacher, PPA cover & Breakfast Club & Lunchtime Supervisor

Stephanie Gregory – Teaching Assistant & Lunchtime Supervisor

Jane Parr – Teaching Assistant Breakfast Club & Lunchtime Supervisor

Tracey Davies – Teaching Assistant & Lunchtime Supervisor

Vanessa Mytton – Teaching Assistant & Lunchtime Supervisor

Donna Walker – Teaching Assistant

Lesley Nightingale – School Secretary & Breakfast Club supervisor

Jade Weir – Caretaker & Cleaner

Sharon Wintin – Cook in Charge

Karen Pugh – Catering Assistant



The Governing Body

Chair of Governors

Paul Croston – Parent Governor

Vice Chair of Governors

Lisa Edwards – Parent Governor

Melissa Thelwell – Parent Governor

Tracey Williams – Community Governor

Nia Brophy – Community Governor

Nigel Jones – Community Governor

Moira Glanville – Additional Community Governor

Vacancy – Local Authority Governor

Eiddwyn Hall – Local Authority Governor

Marcus Pipe – Local Authority Governor

Mark Wyeth – Teacher Governor

Vacancy – Staff Governor

Joshua Jones – Headteacher

Hannah Williams – Clerk to the Governing Body

Staff & Ysgol Sant Dunawd has a Governing Body that is made up of parents of children who attend the school, teachers from the school, a non-teaching member of staff, people appointed by the Local Education Authority and people living and working within the local community. Governors

The Governors have a very important role to play. In conjunction with the Head teacher they are involved in:

- Creating and implementing the schools vision
- Making and authorising financial decisions
 - Forming Policies and monitoring the curriculum
- Setting appropriate challenges for the school
 - Actively pursuing the best interests of children and all associated with the school.

Family Planner 25/26

Term Dates

	Term Starts	Half Term	Term Ends
Autumn Term	03/09/2025	Break 23/10/2025 Back in 03/11/2025	19/12/2025
Spring Term	06/01/2026	Break 13/02/2026 Back in 23/02/2026	27/03/2026
Summer Term	14/04/2026	Break 22/05/2026 Back in 01/06/2026	17/07/2026

Family Learning & Parent's Lunch

	Alyn	Elwy	Ceiriog	Clywedog
Autumn Term	14/10/25 at 9:10am	16/10/25 at 9:10pm	15/10/25 at 11:00pm	17/10/25 at 2:00pm
Spring Term	05/02/26 at 9:10am	04/02/26 at 11:00am	06/02/26 at 9:10am	03/02/26 at 9:10am
Summer Term	15/05/26 at 10:30am	12/05/26 at 2:00pm	14/05/26 at 2:00pm	13/05/26 at 11:00am

Training Days

1. Monday 1st September
2. Tuesday 2nd September
3. Friday 24th October
4. Monday 5th January
5. Monday 13th April
6. Monday 20th July

Special Assemblies

	Assembly	Date
Clywedog	Harvest	09/10/25
Elwy	St David's Day	03/03/26
Ceiriog	Easter	25/03/26

PTA Events

Welcome Back BBQ	12/09/25
Spooky Disco	23/10/25
Easter Bingo	26/03/26
Summer Event	03/07/26

Ysgol Sant Dunawd's Family Planner

In addition to what's listed here, there may be other times when we invite you in for one off events.

Pupil Progress Meetings

	Week commencing
Autumn Term:	Monday 24th November
Spring Term:	Monday 16th March
Summer Term:	Reports out to parents on Friday 10th July

Week commencing

Monday 24th November
Monday 16th March
Reports out to parents on
Friday 10th July

steddfod
Week

w.c. 09/03/25

Science Week

w.c. 07/03/20

Christmas Concerts

04/12/25 (N-Y2)

11/12/25 (Y3-Y6)

Sports Day

16/06/26

Show and Share



Date _____

Autumn Term: 20/11/25

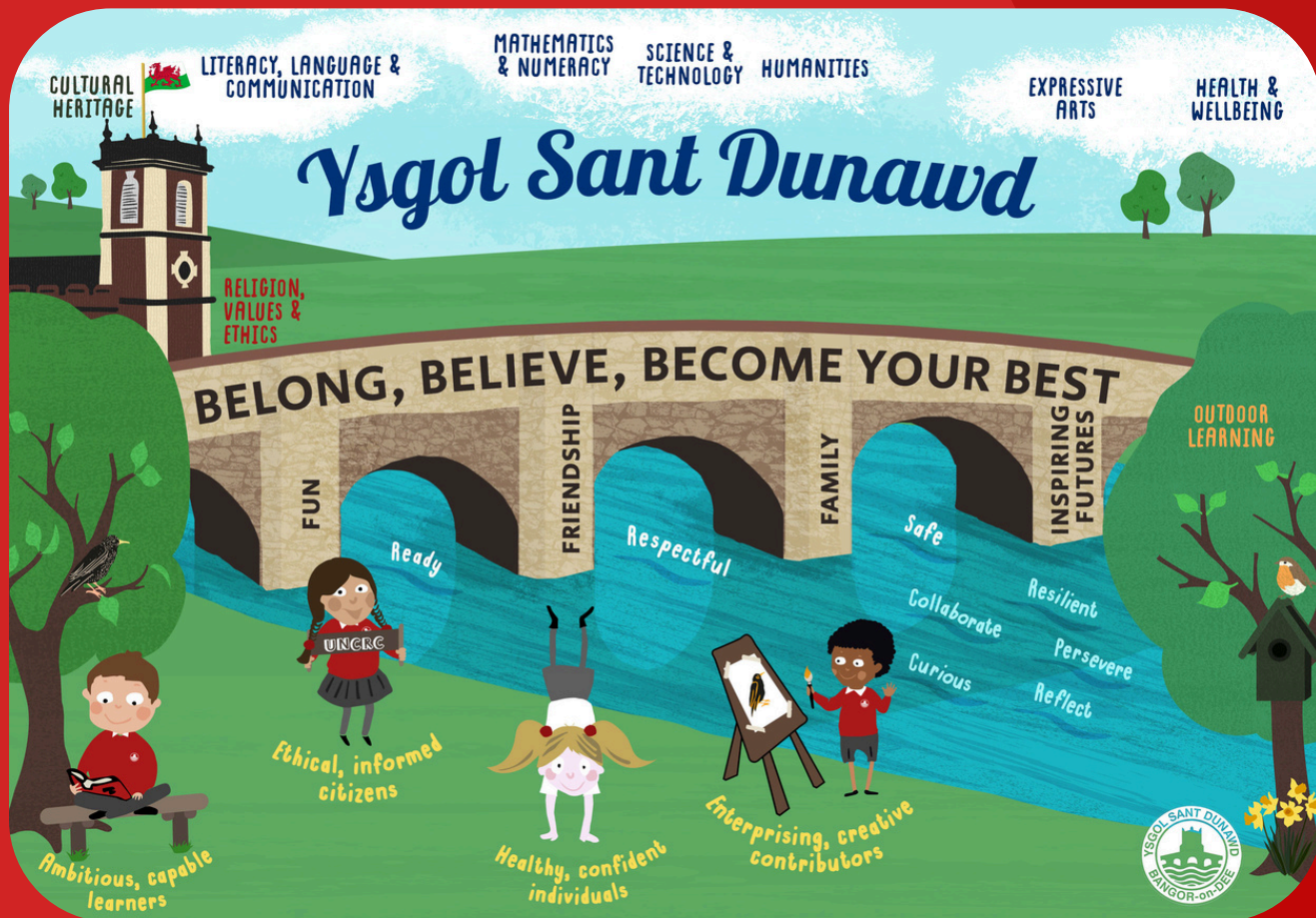
Spring Term: 13/03/26

 www.santdunawd.co.uk

f Ysgol Sant Dunawd

 @YSD_BOD





Ysgol Sant Dunawd

Belong, Believe, Become your Best

Ysgol Sant Dunawd, Sandown Road, Bangor-on-Dee, Wrexham, LL13 0JA

Tel: 01978 780757

Email: mailbox@santdunawd-pri.wrexham.sch.uk

Website: www.santdunawd.co.uk

X: @YSD_BOD

Facebook: Ysgol Sant Dunawd

www.santdunawd.co.uk