



Ysgol Sant Dunawd Curriculum Rationale



Belong, Believe[★][★]
Become your Best

CULTURAL
HERITAGE

LITERACY, LANGUAGE &
COMMUNICATION

MATHEMATICS
& NUMERACY

SCIENCE &
TECHNOLOGY

HUMANITIES

EXPRESSIVE
ARTS

HEALTH &
WELLBEING

Ysgol Sant Dunawd

RELIGION,
VALUES &
ETHICS

BELONG, BELIEVE, BECOME YOUR BEST

FUN

FRIENDSHIP

FAMILY

INSPIRING
FUTURES

OUTDOOR
LEARNING

Ready

Respectful

Safe

Collaborate

Resilient

Persevere

Curious

Reflect

Ethical, informed
citizens

Healthy, confident
individuals

Enterprising, creative
contributors

Ambitious, capable
learners



Our Vision and Values

**Belong, Believe,
Become your Best**

★ **Belong**

Fostering a sense of belonging to school, family, community, and our Welsh culture.

We create a nurturing and collaborative environment that enables our pupils to feel happy, secure and valued - encouraging respect, empathy and individuality.

★ **Believe**

Encouraging ambition, confidence, self-esteem, resilience, perseverance, motivation, positivity and pride.

We believe that all of our pupils can achieve their aspirations by developing a love of learning and by developing self-belief.

★ **Become
your Best**

Nurturing and celebrating academic, moral, social, spiritual and physical progress.

We support our pupils to learn to take ownership and responsibility for their own development and achievement through their effort, determination and dedication towards a successful future.

We are delighted to welcome you to Ysgol Sant Dunawd. We believe that all children can achieve and succeed. It is our commitment to inspire and nurture our children to reach their potential and become their best. We celebrate the uniqueness of our children and support them to thrive with confidence and flourish in individuality.

Our Vision Pillars



Children at Ysgol Sant Dunawd will be able to develop a sense of belonging, believe in themselves and become their best when supported by our vision pillars: *fun, friendship, family and inspiring futures.*

- ❖ We promise to provide a caring, happy and inclusive environment alongside an enjoyable and inspiring curriculum which reflects our beautiful local area, incorporates the interests and ideas of our children, and meets all of their needs.
- ❖ Wellbeing is at the heart of everything we do at Ysgol Sant Dunawd. We are committed to developing relationships with pupils, families and the community, and nurturing children to develop long-lasting friendships with each other too.
- ❖ We will ignite a passion for life-long learning, celebrate achievements along the way and support our children to aspire to be the best that they can be.

Our Context



Our Community

Ysgol Sant Dunawd is located in the beautiful village of Bangor-on-Dee, surrounded by countryside and on the banks of the River Dee. The school was opened in 1978 and can accommodate up to 140 pupils. The area is rural and we are very lucky to have a huge playing field and lots of green space around us. The children love being outdoors. We have very close links with the community and although not a Church school, we visit St Dunawd Church regularly.



Our School

We currently have 4 full-time teachers, 4 full-time teaching assistants and 3 part-time teaching assistants. We have 91 pupils on roll, including 9 part-time Nursery pupils. All of our classes are named after rivers:

Dosbarth Alyn – Nursery

Dosbarth Elwy – Reception & Year 1

Dosbarth Ceiriog – Year 2 and 3

Dosbarth Clywedog – Year 4 and 5

Dosbarth Conwy – Year 6

All of our classes have less than 30 pupils (average size of 20 pupils) and they are all mixed age classes (apart from our Year 6 class). Approximately 12% of our pupils are eligible for free school meals. 8% of pupils have additional needs and 4% of our pupils have English as an additional language.

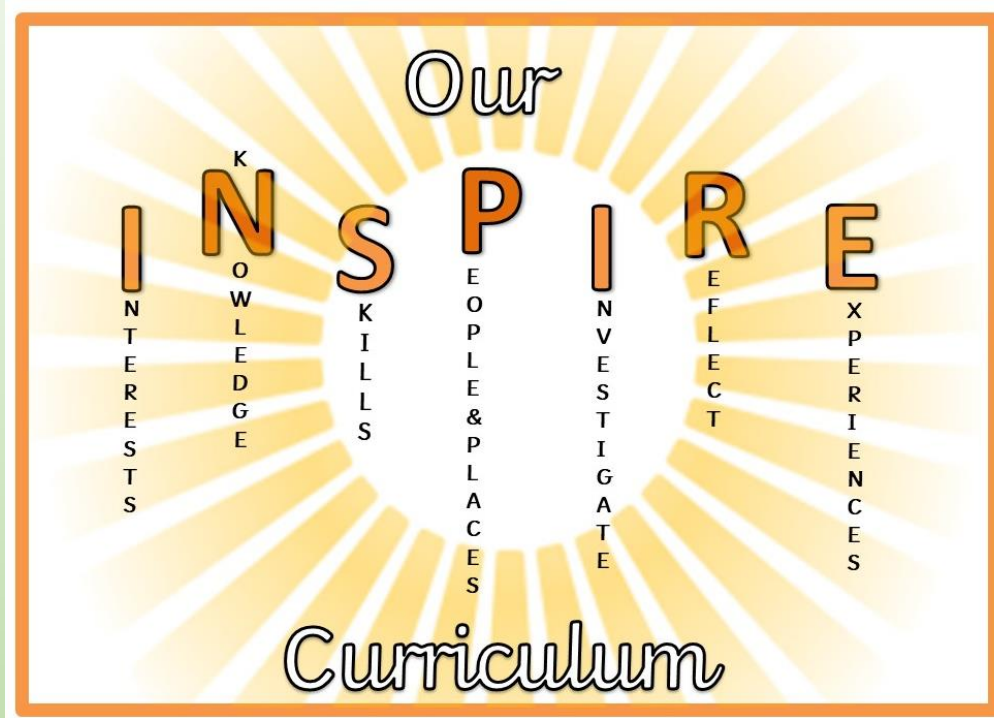
We have a welcoming and active PTA and a strong partnership with all of our families.

Bangor-on-Dee Childcare is also situated within our school and therefore children are happy and confident when making the transition from Childcare to our Nursery.

Our Curriculum

“A school’s curriculum is everything a learner experiences in pursuit of the four purposes. It is not simply what we teach, but how we teach and crucially, why we teach it.”
(Welsh Government, Curriculum for Wales, 2020)

At Ysgol Sant Dunawd, children spend their days being curious, exploring, and engaging in purposeful learning experiences whilst developing new skills and increasing their knowledge.



Our INSPIRE curriculum, driven by the passion to create learners who are ambitious, healthy, confident, creative and ethically informed, means that Ysgol Sant Dunawd children not only have the skills and knowledge to succeed in the next stage of their school journey, but to continue succeeding in an ever-changing world.

Our Curriculum – Why?

Our aim is to ensure that the **INSPIRE** curriculum at Ysgol Sant Dunawd reflects and promotes our vision and values; enabling learners to realise and progress towards the four purposes.

- ❖ It reflects our community and the needs of our children.
- ❖ It teaches and empowers pupils to be responsible for their own learning
- ❖ It encourages pupils to believe in themselves and become their best.
- ❖ It is centred around our pupils and their ideas.

The Four Core Purposes at Ysgol Sant Dunawd

We looked at each purpose and made them more child-friendly for our learners.

Ambitious and Capable Learners:



- Challenge themselves
- Apply their knowledge
- Set high standards
 - Show resilience
- Communicate confidently

Enterprising and Creative Learners:



- Take all opportunities
- Think & Act Creatively
- Make good team players
- Think outside the box

Healthy and Confident Learners:



- Have healthy minds & bodies
- Make independent choices
- Feel good about themselves
- Demonstrate strong values

Ethical and Informed Learners:



- Understand everyone's rights & responsibilities
- Respect others & their environment
- Know about & take pride in Wales and the world
- Develop informed opinions

Our Curriculum – What?

What does our curriculum include?

Creativity & Innovation

Our children are given space to be curious and inquisitive, and to generate many of their own ideas.

Critical Thinking & Problem Solving

They are supported to ask meaningful questions, and to evaluate information, evidence and situations.

Planning & Organising

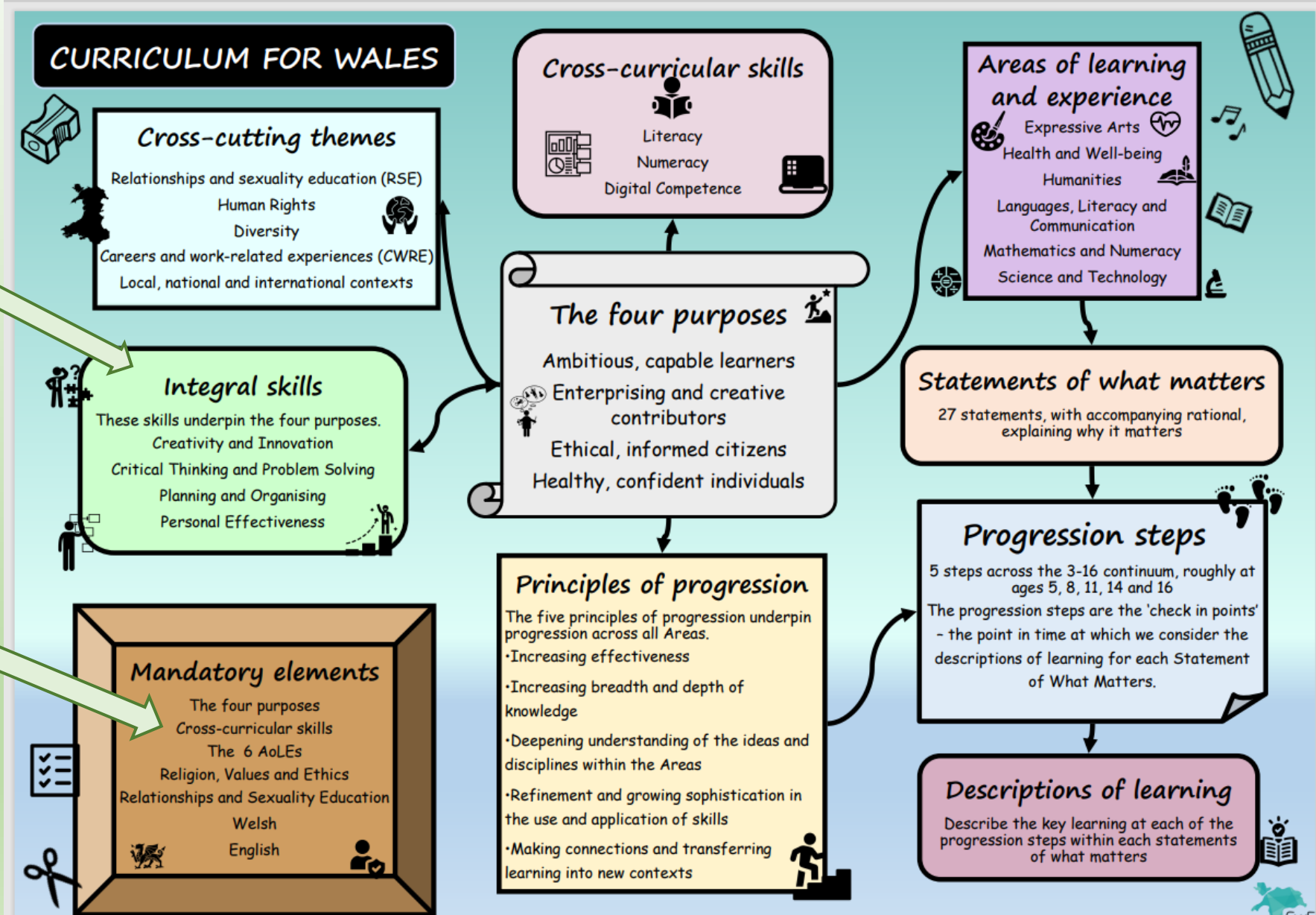
They are given opportunities to set goals, make decisions and, through reflection, they monitor their results.

Personal Effectiveness

Emotional intelligence and awareness are developed, enabling our children to become confident and independent. They will be able to evaluate their learning and mistakes, and identify their next steps.

Our children are given opportunities to apply and embed these skills across the curriculum:

- develop listening, reading, speaking and writing skills
- use numbers and solve problems in real-life situations
- become confident users of a range of technologies to help them function and communicate effectively and make sense of the world.



Our Curriculum – What?

Our INSPIRE curriculum includes all 27 statements of what matters. These statements guide our curriculum content choices, and our selection of the knowledge, skills and experiences that will best support learning for our children.

Statements of What matters					
Expressive Arts	Health & Wellbeing	Humanities	Language, Literacy & Communication	Maths & Numeracy	Science & Technology
WM 1 Exploring the expressive arts is essential to developing artistic skills and knowledge and it enables learners to become curious and creative individuals.	WM 1 Developing physical health and well-being has lifelong benefits.	WM 1 Enquiry, exploration and investigation inspire curiosity about the world, its past, present and future.	WM 1 Languages connect us.	WM 1 The number system is used to represent and compare relationships between numbers and quantities.	WM 1 Being curious and searching for answers is essential to understanding and predicting phenomena.
WM 2 Responding and reflecting, both as artist and audience, is a fundamental part of learning in the Expressive Arts.	WM 2 How we process and respond to our experiences affects our mental and emotional wellbeing.	WM 2 Events and human experiences are complex and are perceived, interpreted and represented in different ways.	WM 2 Understanding languages is key to understanding the world around us.	WM 2 Algebra uses the symbol systems to express the structures of relationships.	WM 2 Design thinking and engineering offer technical and creative ways to meet society's needs and wants.
WM 3 Creating combines skills and knowledge, drawing on the senses, inspiration and imagination.	WM 3 Our decision making impacts on the quality of our lives and the lives of others.	WM 3 Our natural world is diverse and dynamic, influenced by processes and human actions.	WM 3 Expressing ourselves through languages is key to communication.	WM 3 Geometry focuses on relationships involving shape, space and position, and measurement focuses on quantifying phenomena in the physical world.	WM 3 The world around us is full of living things which depend on each other for survival.
	WM 4 How we engage with social influences shapes who we are and affects our health and wellbeing.	WM 4 Human societies are complex and diverse and are shaped by human actions and beliefs.	WM 4 Literature fires imaginations and inspires creativity.	WM 4 Statistics represent data, probability models chance, and both support informed inferences and decisions.	WM 4 Matter and the way it behaves defines our universe and shapes our lives.
	WM 5 Healthy relationships are fundamental to our well-being.	WM 5 Informed, self-aware citizens engage with the challenges and opportunities that face humanity, and are able to take considered and ethical action.			WM 5 Forces and energy provide a foundation for understanding our universe. WM 6 Computation is the foundation for our digital world.

Our children will explore topics and activities through the lens of each Area of learning and experience:

Expressive Arts

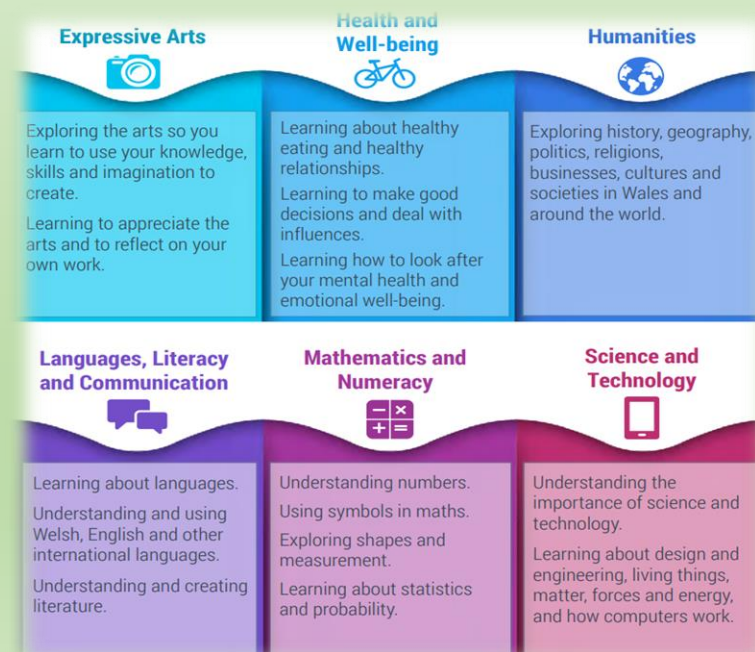
Health & Wellbeing

Humanities

Language, Literacy & Communication

Maths & Numeracy

Science & Technology



RSE

At Ysgol Sant Dunawd, Relationships and Sexuality Education (RSE) will be developmentally appropriate for our children dependent on their age, maturity and any additional learning needs they may have. Where appropriate, it will be taught through the use of stories, and links will be made with other Areas of Learning and Experience.

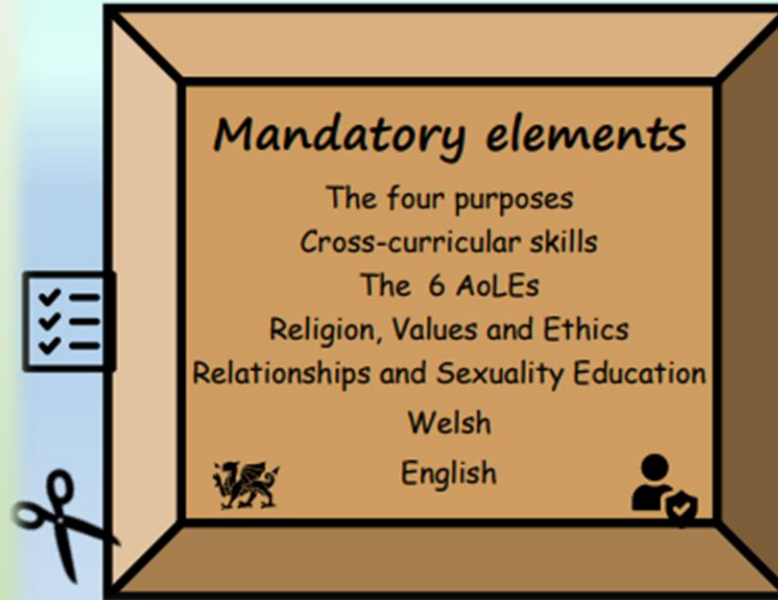
RSE will empower our children to:

- ❖ Support their health and well-being.
- ❖ Develop healthy, safe and fulfilling relationships.
- ❖ Navigate and make sense of how relationships shape their own and other people's identities and lives.
- ❖ Understand and support their rights and those of others.



Our Curriculum – What?

RVE



Welsh



Children celebrate Wales and the Welsh language, culture and heritage through their work and the principles of the language continuum is incorporated into our curriculum. Residential visits to Pentrellyncymer, Cardiff and Glan -llyn are also available to our children.

Religion, Values and Ethics is a mandatory part of our Humanities area of learning and is built upon a series of concepts and big ideas. We will use a range of approaches to support learners to engage critically with a broad range of religious and non-religious philosophical convictions. Our INSPIRE curriculum provides opportunities to teach RVE through:

- ❖ Explicit teaching of world beliefs
- ❖ Exploring ideas through “Big Questions”
- ❖ Encouraging all pupils to see links with real world events
- ❖ Reflection on our world and how we can make a difference
- ❖ Opportunities to study local and global contexts referring to the Sustainable Development Goals
- ❖ Developing critical thinking skills
- ❖ Collective worship time and reflection
- ❖ Stories, school events and visitors

Religion, Values and Ethics at Ysgol Sant Dunawd has been designed having regards to the Agreed Syllabus in Wrexham.

Our Curriculum – Experiences

At Ysgol Sant Dunawd, we want to offer our children a range of experiences and activities to enhance their education whilst they are with us.

In addition to our INSPIRE curriculum, we also have our FAB 6 which is a list of Fifty Activities Before the end of year 6. This list has been created with our children, parents and staff to enrich the education of our pupils.



Sant Dunawd's FAB 6

Fifty Activities Before... the end of Year 6! This fab list of activities and experiences has been created with our children, parents and staff to enrich the education of our pupils during their time at Ysgol Sant Dunawd.

Perform on stage 	Camp Out 	Ride a bike 	Nature walk 	Plant, grow & eat
Make something to sell 	Go to the seaside 	Paddle in the river 	Display work in an art gallery 	Earn an award
Care for a living thing 	Plan and cook a meal 	Explore a castle 	Visit a museum 	Litter Pick
Have a picnic 	Visit a farm 	Climb a tree 	Visit a sports stadium 	Toast marshmallows
Build a den 	Learn sign language 	Trip to the zoo 	Face a fear 	Donate to a food bank
Visit a library 	Try a musical instrument 	Phone call home 	Try a water activity 	Go to the Eisteddfod
Help someone in the community 	Meet an author 	Build a snowman 	Climb a mountain 	Buy an item from the shop
Raise money for charity 	Run a mile 	Use a map 	Bird Watch 	Star Gazing
Watch a show in a theatre 	Learn first aid 	Read outside 	Play a board game 	Learn to knit or sew
Visit a Wonder of Wales 	Skim a stone 	Have a pen pal 	Visit a place of worship 	Learn mindfulness

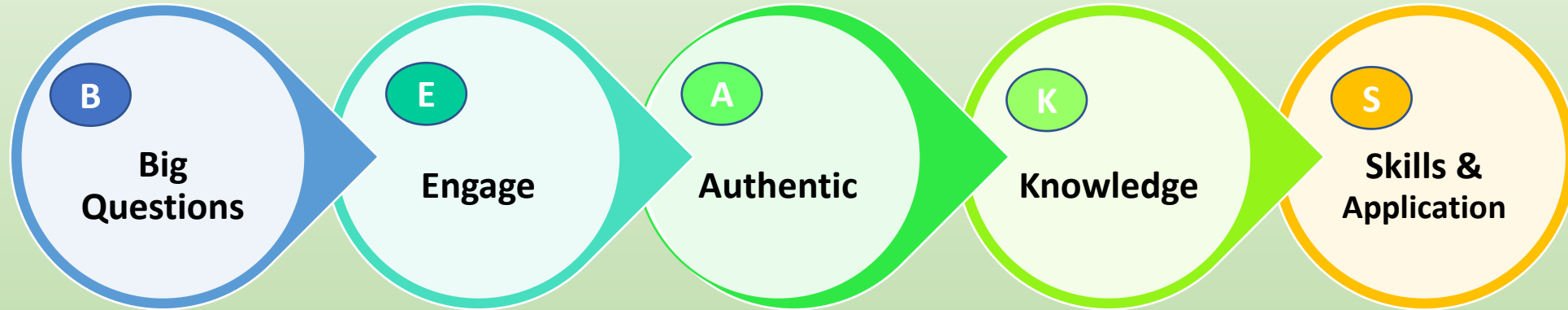
Our Curriculum – How?

Our whole school 'BEAKS' approach to planning ensures consistency across the school:

Planning

Engage our learners through building on their previous knowledge. Discover their starting points so that learners can identify what they need to find out and how they are going to find out.

Knowledge. Through a variety of teaching approaches and use of experts where necessary, learners will deepen their knowledge and understanding of concepts making progress within and across each what matter statement.



Big questions and immersion activities to excite and capture the interest of our learners. It will encourage curiosity and pupil voice - children will share their ideas and interests during the 'tuning in' session which will then be included in the planning process.

Authentic contexts and links to the real world. Learners will be given opportunities to make links locally and globally and they will understand how their learning goes beyond the classroom.
Assessment for Learning.

Skills and application. Learners will be given opportunities to use and apply their knowledge and cross curricular skills across all areas of learning.

Teaching & Learning

“Every child deserves a champion – an adult who will never give up on them, who understands the power of connections and insists that they become the best that they can possibly be.”
Rita Pierson

All of our amazing staff at Ysgol Sant Dunawd believe in the importance of creating an environment which is caring, safe and inclusive for learning. They are committed to their own professional development to ensure they become the best they can be and continue to provide the best education for our children.



Ysgol Sant Dunawd Effective Learning Charter

*Belong, Believe,
Become your Best*

- I will make sure that my pupils feel a sense of belonging, have belief in themselves and understand that through their effort they will become their best.
- My classroom will be welcoming and caring, and mistakes will be valued and used as part of the learning process.
- The learners in my classroom will understand our 'Ready, Respectful & Safe' expectations so that learning is our key focus. My learners will be given opportunities to use their 'Learning Superpowers'.
- My lessons and activities will be engaging, authentic and accessible to all learners. My learners will understand the intention and purpose of their lessons.
- I will use a range of teaching strategies to suit my pupils' needs (review previous learning, direct instruction, effective questioning, enquiry based learning, modelling & examples, scaffolding, independent practise, assessment for learning, regular reviews).
- Everyone has a different starting point. Using AFL strategies, I will find out the starting points of all my learners. Through support and challenge, I will ensure all learners make progress and will experience success. I will provide timely feedback, and encourage my learners to seek feedback. Together, we will plan their next steps.
- I will continue to improve my performance and extend my own knowledge, through research, professional development, collaboration and reflection of my own practice in order to become my best.



Effective Learners at Ysgol Sant Dunawd

Where am I now?
How am I doing?
Where to next?

- Ask questions and show curiosity.
- Understand the strategies they use to learn.
- Collaborate with others to learn new skills.
- Seek challenge.
- Persevere when faced with a challenge.
- Show resilience.
- Know what progress looks like.
- Seek and respond to feedback.
- Reflect on their learning.
- Know that practise makes progress.
- Believe they can achieve.
- Work hard to become their best.

Sant Dunawd's Learning Superpowers



	<p>We are curious. Ask lots of questions. Keen to find out the answers to my wonders. Enjoy discovering and exploring new things by noticing, thinking of possible reasons and extending by asking 'What might happen if...?'</p>
	<p>We collaborate. Work well with a learning partner or in a group. Support or accept support from a learning partner. Listen and respond to others. Share ideas. Compromise when necessary to get the best out of everyone. Value the importance of teamwork.</p>
	<p>We persevere. Keep going when I am faced with a challenge and don't give up. Always give 100% and learn from my mistakes. Believe that my effort is what matters most. When I am stuck, I can use different strategies to get 'unstuck'.</p>
	<p>We are resilient. Think positively and use positive words. Try not to dwell on things that I can't change or do anything about. Learn from my mistakes and the mistakes of others. Adapt quickly to new situations. 'Bounce back' when things don't go to plan. Know that I can overcome challenges because I see them as temporary. Manage distractions. Enjoy humour and can laugh at myself.</p>
	<p>We reflect. Consider what I have done well and what I can improve. Think about the ways in which I learn. Seek and respond to feedback. Try different strategies when I'm not making progress.</p>

How will we assess progress?

We use the **Descriptions of Learning** from each **What Matters Statement** to assess and plan for learners' progress.

These broadly correspond to expectations for ages 5, 8 and 11 and offer guidance on how learners should demonstrate progress within each Statement:

Progression Step 1 –
Nursery & Reception

Progression Step 2 –
Years 1, 2 & 3

Progression Step 3 –
Years 4, 5 & 6

In addition, there are **Principles of Progression** that underpin our planning for learners' progress over time:

Principles of Progression				
Increasing breadth and depth of knowledge	Deepening understanding of the ideas and disciplines in the Areas	Refinement and growing sophistication in the use and application of skills	Making connections and transferring learning into new contexts	Increasing effectiveness

What is the purpose of assessment?

The main purpose of assessment is ensuring learner progress at an appropriate pace from an individual starting point. At Ysgol Sant Dunawd, we develop an holistic view of learner progress including their well-being, readiness and desire to learn alongside the development of skills, knowledge and understanding.

Regular professional dialogue will take place with families during termly Pupil Progress Review Meetings to support learner progression and ensure that families know how to support learning outside of the classroom. We also ensure professional dialogue between classes and schools to facilitate effective transition and continuity of learner progression.

We will utilise various assessment strategies to ensure learners are supported and challenged appropriately to make progress at all stages of their learning journey:

Formative high-quality Assessment for Learning (AfL) strategies are used daily with pupils to provide an overview of progress in the short term. These strategies provide information for practitioners to plan the next steps for learners and also for learners to be aware of what they know, where they need to go next and how they can get there. We use the Seesaw platform to facilitate regular engagement with families.

Summative assessment strategies such as national and standardised tests are also used to summarise progress over time and help to ensure that all pupils are being supported and challenged appropriately.



Formative assessment is at the heart of our pedagogy at Ysgol Sant Dunawd. By implementing these strategies and principles consistently throughout school, we will achieve many aspects of the four purposes, integral skills and 12 pedagogical principles.

Formative assessment strategy / principle	4 purposes	Integral skills	12 pedagogical principles
Class climate and culture <ul style="list-style-type: none"> - Developing a Growth Mindset - Sant Dunawd Super Learning powers - Celebrating mistakes - Embracing challenge 	Ambitious, capable learners Healthy, confident individuals Enterprising, creative contributors	Creativity and innovation Personal Effectiveness Planning and organization Critical thinking and problem solving	1,2,3 7, 10,11, 12
Pupil Voice <ul style="list-style-type: none"> - Involvement of children in planning - 'Tuning in' at the start of an inquiry 	Ambitious, capable learners Healthy, confident individuals Enterprising, creative contributors	Creativity and innovation Personal Effectiveness Planning and organization Critical thinking and problem solving	1,2,3 7, 10,11, 12
Learning partners <ul style="list-style-type: none"> - Children swap learning partners each week to give them the opportunity of working with everyone in the class 	Ambitious, capable learners Healthy, confident individuals Enterprising, creative contributors	Personal Effectiveness Planning and organization Critical thinking and problem solving	1,2,3,4 7, 10,11, 12
Learning Intentions and Success Criteria <ul style="list-style-type: none"> - What am I learning now? - How am I doing? - Where to next? 	Ambitious, capable learners	Personal Effectiveness Planning and organization	2,3,4,5,7, 10, 11,12
Feedback <ul style="list-style-type: none"> - 'In the moment' verbal feedback - Peer assessment - Written feedback and feedforward 	Ambitious, capable learners Healthy, confident individuals Enterprising, creative contributors	Personal Effectiveness Planning and organization Critical thinking and problem solving	1,2,3,4, 7, 10,11, 12
Prior and Current Knowledge Questioning	Ambitious, capable learners Healthy, confident individuals Enterprising, creative contributors	Personal Effectiveness Planning and organization Critical thinking and problem solving	1,2,3,4,5,7,10 11, 12
Differentiated challenges / eliminating ability grouping	Ambitious, capable learners Healthy, confident individuals	Personal Effectiveness Planning and organization Critical thinking and problem solving	1,2,3,5,7,10 11, 12

One Page Profiles

At Ysgol Sant Dunawd all of our pupils develop a **One Page Profile**. Parents give teachers 'top tips' about their children which help us to know how best to support their child. The profiles are personal to each child and give us a useful insight into our pupils.

Sports & After School Clubs



Interventions



We have a variety of interventions to support pupils: Volcano in my Tummy for those children struggling to manage their anger. Self Esteem groups and Lego Therapy to develop confidence and self-belief.

Our Friends for Life group helps to support pupils showing signs of anxiety. The children absolutely love their sessions. Our SAP groups help to build confidence and self-esteem.



Five Ways to Wellbeing

Connect – Connecting with others makes you feel like you belong, you are important and you are valued. Belonging helps raise your self-esteem.

Be active – Being active and eating healthily makes you feel good. It is a great way to reduce any anxiety.

Take notice – This means being in the present moment and learning to see what is there right now.

Learn new things – Learning new things can be fun, makes you feel good and builds your confidence.

Give – Acts of kindness and helping others can make you feel happier.

Wellbeing at Ysgol Sant Dunawd



Trips, Residentials & Camp Out

Our children love to spend time together during school trips and residentials and it is great for their health and wellbeing.



Outdoor Education & Forest School



Pupil Voice

Pupil Voice is visible throughout the school: Pupil Planning, School Council, Eco Council, E- Cadets, Buddies, Super Ambassadors, Roles & Responsibilities & Criw Cymraeg.

Annual PASS Surveys and Pupil Questionnaires are used for our children to share how they are feeling about school and their work. We have follow up meetings with children to talk about what school can do to help with any difficulties they may be having.

Glossary of terms

AfL – Assessment for Learning
ALN – Additional Learning Needs
EAL – English as an additional language
AoLE – Areas of learning and experience
LNF – Literacy & Numeracy Framework
DCF – Digital Competency Framework
RVE – Religion, Values & Ethics
RSE – Relationships and Sexuality Education
FSM – Free School Meals

Useful Links

A guide to the new curriculum for children and families:

[a-new-curriculum-in-wales-a-guide-for-children-young-people-and-families.pdf \(gov.wales\)](https://gov.wales/a-new-curriculum-in-wales-a-guide-for-children-young-people-and-families.pdf)

An overview to the new curriculum:

[2022 - A new curriculum for Wales has arrived - YouTube](https://www.youtube.com/watch?v=2022-A-new-curriculum-for-Wales-has-arrived)

Assessment arrangements in the new curriculum:

[Wales' new curriculum and assessment arrangements 2022 - YouTube](https://www.youtube.com/watch?v=Wales-new-curriculum-and-assessment-arrangements-2022)

Information for parents and carers about Relationships and Sexuality Education :

[rse-info-22.pdf \(gov.wales\)](https://gov.wales/rse-info-22.pdf)